

# Plextor M6e

## Part. A 【Firmware update Function】

This tool is designed to update firmware of PX-G128/256/512M6e and PX-AG128/256/512M6ePCIe SSD series.

To insure the updating process can be executed correctly and successfully , please follow the instructions exactly .

Steps:

1. Prepare a bootable USB device with MSDOS
2. Copy all files to the root directory of USB device

ex:

If USB device is F:

In the Microsoft Explorer,

you should see following files in root directory:

F:\Flash.BAT

F:\HIMEM.SYS

F:\EMM386.EXE

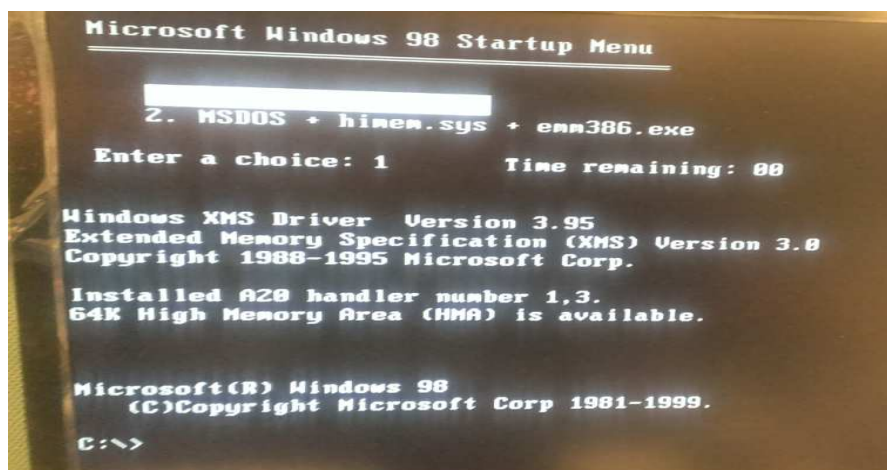
F:\SSDflash.EXE

F:\1.BIN

....etc

新增資料夾			
名稱	修改日期	類型	大小
1.BIN	2014/3/24 下午 0...	BIN 檔案	256 KB
2.BIN	2014/3/24 下午 0...	BIN 檔案	256 KB
Config.sys	2013/11/19 下午...	系統檔案	1 KB
EMM386.EXE	2013/10/5 下午 0...	應用程式	123 KB
Flash.BAT	2013/11/24 下午...	Windows 批次檔案	1 KB
HIMEM.SYS	2009/7/24 下午 0...	系統檔案	33 KB
m.exe	2014/2/10 下午 0...	應用程式	322 KB
R.DAT	2014/3/24 下午 0...	DAT 檔案	42 KB
readme.txt	2014/3/24 下午 0...	文字文件	1 KB
SSDC.DAT	2014/3/24 下午 0...	DAT 檔案	1 KB
SSDFlash.exe	2014/3/24 下午 0...	應用程式	145 KB

3. Boot to MSDOS by USB bootable device
4. Select menu : [NORMAL, MSDOS + himem.sys]
5. Execute Flash.BAT to update firmware



Note:

1. Tool only supports Legacy mode because USB can't boot up under UEFI mode.
2. Please make sure your BIOS be set under AHCI mode.
3. For some specific platforms, if [NORMAL, MSDOS + himem.sys] is not work; Please reboot the system, select [EMM386, MSDOS + himem.sys + emm386.exe] instead.

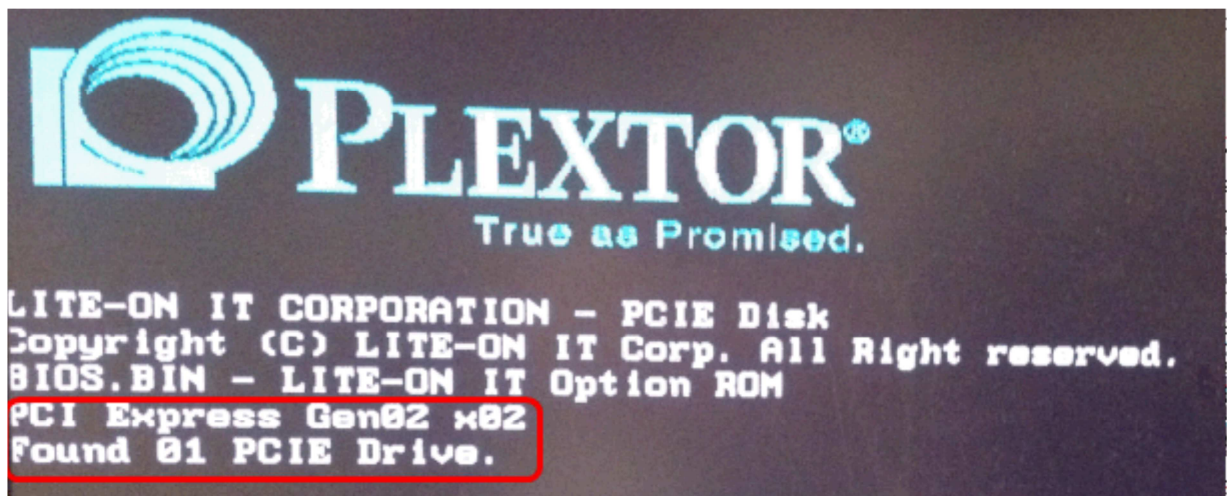
## Part. B 【PCIe Link status checker】

PX-G128/256/512M6ePCIe and PX-AG128/256/512M6e PCI Express SSD series are designed as PCI Express Gen2 x 2 lan storage devices. The preparing state image will shows the description of PCIe SSD link status for users to confirm whether their PCIe SSD works under PCIe Gen2 x2 lan environment before entering operating systems.

Steps:

Boot up computer, then the PLEXTOR logo will show up on the screen in seconds.

Please check the description which be pointed out in red column.



Note:

1. Once your system doesn't show you "PCI Express Gen02 x02" on the screen, your PX-G128/256/512M6e and PX-AG128/256/512M6e PCIe SSD might not works under Gen2 x2lan.

It may be caused by different designs of motherboards 、CPUs.

Ex: 1<sup>st</sup> and 2<sup>nd</sup> generation Intel CPU doesn't support PCIe Gen2x2.

Ex: PCIe Bandwidth resource varies by motherboard design.

Some PCIe slot share bandwidth with other slots and the slot which is plugged with M6e may be allotted only Gen2x1.

Ex: Some motherboards will set part of slots to Gen2x 1lan by default. This may be improved by manually set the slot to Gen2 x2 lan in BIOS setting.

For detail information, users can find FAQ on web site.

2. If the logo flashes too fast and users can't see the image and description, please try to press "Pause/Break" on keyboard for temporary stop.
3. This function is added after ver. 1.03.